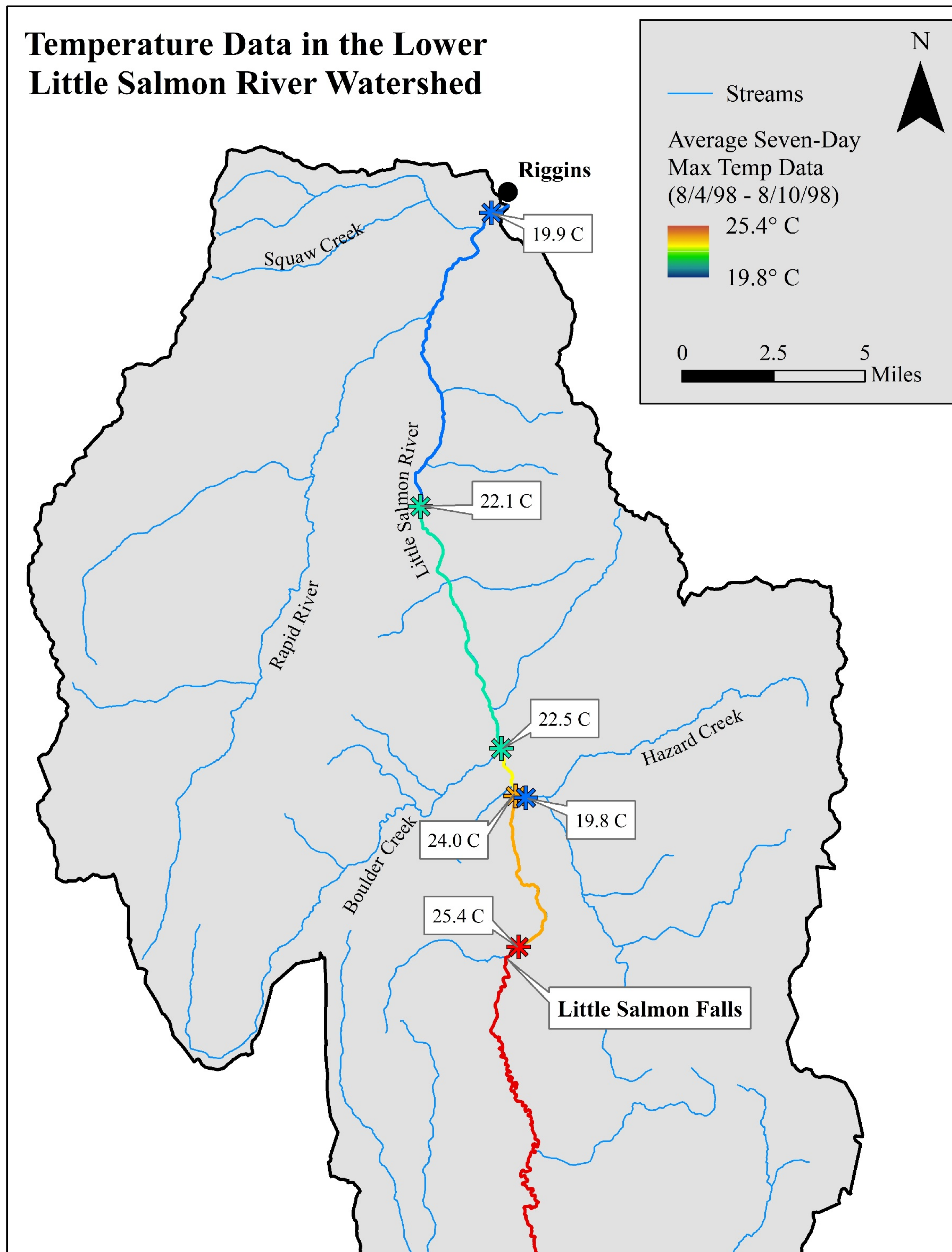


Temperature Data in the Lower Little Salmon River Watershed



Station Location	8/4/98	8/5/98	8/6/98	8/7/98	8/8/98	8/9/98	8/10/98	Average 7-Day Max. Temp.
River Mile 0.50 USGS Gage Station Elevation 1,760 feet	20.5 C 416 cfs	20.5 C 396 cfs	20.0 C 382 cfs	19.8 C 374 cfs	19.3 C 363 cfs	19.3 C 352 cfs	19.7 C 344 cfs	19.9 C 375 cfs
River Mile 10.31 Lower Canyon, 95 Bridge Elevation 2,420 feet	23.0 C	22.5 C	22.5 C	22.0 C	21.5 C	21.5 C	22.0 C	22.1 C
River Mile 18.0 1.5 Mile Downriver Hazard Cr. Elevation 3,070 feet	23.0 C	23.2 C	23.0 C	22.2 C	21.7 C	22.2 C	22.6 C	22.5 C
River Mile 19.5 50 m. Upriver Hazard Cr. Elevation 3,170 feet	24.3 C	24.7 C	24.3 C	23.5 C	23.3 C	23.6 C	24.0 C	24.0 C
River Mile 24.72 Upper Meadows (North End) Smokey Boulder Rd., 95 Bridge Elevation 3,780 feet	26.3 C	26.3 C	25.8 C	25.1 C	24.9 C	25.1 C	24.4 C	25.4 C
Hazard Creek Station SM 0.05	20.3 C	20.4 C	20.3 C	20.0 C	19.0 C	19.0 C	19.6 C 37.5 cfs	19.8 C